



RAILGLASS RG-200 / RAILGLASS RG-500



SMOKE BAFFLE SB-200



GLASS BRACKET AND
WALL BRACKET

M-2010

RAILINGS SMOKE BAFFLES GLASS GATES

COPYRIGHT 2009



RAILGLASS RG-450 / RAILGLASS RG-650



GLASS GATE

THIS CATALOGUE IS PREPARED EXCLUSIVELY
FOR THE ARCHITECTURAL PROFESSION

460 MELWOOD AVENUE • PITTSBURGH, PA 15213-1195
TELEPHONE 412-681-2400 • FAX 412-681-6840

GENERAL INQUIRIES: info@blumcraft.com • ENGINEERING DEPARTMENT: eng@blumcraft.com

VISIT OUR WEBSITE AT: www.blumcraft.com

The Evolution of Blumcraft



The Early Years

Blumcraft's founder Hyman Blum, a young artisan from Latvia, immigrated to America in 1908. He was a highly skilled craftsman whose forte was hand-forged decorative wrought iron railings, gates, lighting fixtures, and ornamental hardware. His creativity with metals and the prudent business sense of his three sons, Max, Louis, and Harry facilitated the transition of the Hyman Blum Company into Blumcraft of Pittsburgh.

The Blum collection of exquisite metal treasures can be seen at the Heinz History Center in Pittsburgh.

A New Era

During World War II, metal was not allowed to be used for decorative purposes, but after the war ended and the restrictions were lifted, Blumcraft pioneered the development of innovative adjustable aluminum handrail components. As architectural trends changed, Blumcraft again enhanced its leadership role in the industry by adding wood, glass, bronze, brass, and stainless steel to its product line. Following working relationships with PPG Industries and Libbey Owens Ford, Blumcraft launched new product lines, thanks in part to the creativity of a brilliant designer, Bill Horgan. Tempered glass doors and attractive operating hardware once again established a higher level of architectural design acceptance.

Blumcraft Today

Blumcraft of Pittsburgh continues to proudly manufacture fine top quality American made products. With the passing of Louis Blum, the last remaining partner, on March 31, 2004 at the age of 94, the Blumcraft legacy continues under the leadership of Myron Caplan and Rick Kremer. Having over 80 years of combined experience with the firm, these men will lead Blumcraft into the future.

As always, Blumcraft will assist architects by publishing catalogues in Sweets hard copy files, by maintaining up to date sections within the Sweets website, and by supporting its own online website, www.blumcraft.com

Throughout the years, architects have come to expect superb quality of design exhibited by tempered glass doors, architectural hardware, railing systems, and display case doors.

Blumcraft of Pittsburgh will fulfill these expectations with service and quality!



RAILGLASS RG-200
RAILGLASS RG-500
For Details See Page 6



RAILGLASS RG-450
RAILGLASS RG-650
For Details See Page 7



GLASS BRACKETS
AND WALL BRACKETS
For Details See Page 17

Inside This Catalogue

Railglass (Structural Glass Rail System)

Two Piece Base RG-200/RG-500	4,6
Two Piece Base Side Mounted RG-450/RG-650	5,7
Two Piece Railglass Base Details	8-10
One Piece Base RG-100S, RG-105S, RG-175S	11
Smoke Baffle	12-13
Aluminum Posts	14-15
Glass Brackets and Wall Brackets	16-17
Aluminum and Railwood Handrails	18-21
Glass Gates	22

How Blumcraft Can Assist the Architect

- BLUMCRAFT WILL REVIEW ARCHITECT'S PRELIMINARY DRAWINGS FOR THE GENERAL CONSTRUCTION OF RAILINGS
- THE ARCHITECT'S STRUCTURAL ENGINEER SHOULD DETERMINE THE THICKNESS OF THE TEMPERED GLASS FOR RAILINGS BASED ON WIND LOADS, STATIC ACTION, MOUNTING TO BUILDING STRUCTURE, ETC.
- LOCAL BUILDING CODES SHOULD ALSO BE CONSIDERED AS THEY VARY IN DIFFERENT AREAS
- ENGINEERED SHOP DRAWINGS WILL BE PREPARED AFTER A PURCHASE ORDER IS RECEIVED

All of the above services are gratis to the ARCHITECT





RAILGLASS® SPECIFICATIONS FOR A TWO PIECE MOUNTING BASE SYSTEM

RAILING SUB-CONTRACTOR SHALL FURNISH "RAILGLASS" (TWO PIECE MOUNTING BASE SYSTEM) COMPLETE WHERE INDICATED ON DRAWINGS. PART NUMBERS REFER TO COMPONENTS FURNISHED BY **BLUMCRAFT OF PITTSBURGH, 460 MELWOOD AVENUE, PITTSBURGH, PENNSYLVANIA 15213**, AND SHALL BE AS ILLUSTRATED IN THEIR CURRENT CATALOGUE AND AS PUBLISHED IN SWEET'S ARCHITECTURAL FILE.

GLASS - SHALL BE 1/2" OR 3/4" THICK TEMPERED SAFETY GLASS, MEETING THE REQUIREMENTS OF ANSI STANDARD Z97.1 FOR SAFETY GLAZING MATERIALS AND CONSUMER PRODUCT SAFETY COMMISSION STANDARD 16 CFR 1201 CATEGORIES 1 AND 2.

STRUCTURAL LOAD CAPABILITIES - BLUMCRAFT GLASS RAILINGS ARE CONSTRUCTED TO MEET ALL TYPICAL CODE REQUIREMENTS. FOR RAIL HEIGHTS OF 3'-6" AND LESS. IF CODE SPECIFIES:

DISTRIBUTED LOAD	CONCENTRATED LOAD	GLASS	MINIMUM LENGTH OF RAIL
50 PLF	200#	1/2"	4'-0"
100 PLF	300#	3/4"	2'-6"

THESE LOADS SATISFY UBC, BOCA, AND OSHA CODES. FOR SHORTER RAIL LENGTHS OR HIGHER RAILS, SEND PRELIMINARY SKETCHES TO BLUMCRAFT'S ENGINEERING STAFF FOR REVIEW.

PHYSICAL TEST REPORT - OF TEMPERED GLASS RAILING PREPARED BY AN INDEPENDENT TESTING LABORATORY SHALL BE FURNISHED TO ARCHITECT SHOWING COMPLIANCE WITH THE ABOVE REQUIREMENTS.

ALUMINUM MOUNTING BASE ASSEMBLY - SHALL BE A TWO PIECE SYSTEM, WITH ONE MEMBER PERMANENTLY INSTALLED TO THE BUILDING STRUCTURE READY TO RECEIVE THE OTHER MEMBER THAT HAS BEEN BONDED TO THE GLASS. ALL SHALL BE RIGIDLY ANCHORED TO FLOOR OR STAIRS IN A POSITIVE MANNER INCLUDING SUFFICIENT RE-REINFORCEMENT AND ANCHORING AS REQUIRED.

ALUMINUM HANDRAILS AND MOUNTING BASES - SHALL BE U.S. ALLOY 6063 SATIN FINISH, CLEAR ANODIZED, DURANODIC MEDIUM BRONZE, DARK BRONZE, OR BLACK.

WOOD HANDRAIL - WOOD SHALL BE BONDED TO ALUMINUM SUB-STRUCTURE FORMING A COMPLETE HANDRAIL UNIT. SPECIFY WOOD TYPE.

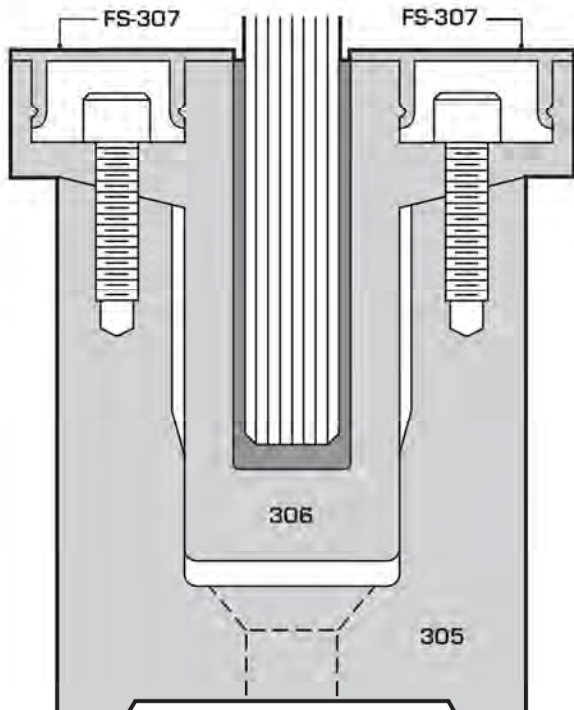
REPLACEMENT OF GLASS PANELS - GLASS PANELS SHALL BE MADE REMOVABLE FOR REPLACEMENT WITHOUT CHIPPING OUT THE EMBEDDED GLASS AT BUILDING SITE.

INSTALLATION - SHALL BE RIGID AND SECURE, INSTALLED BY MECHANICS EXPERIENCED IN ERECTION OF ARCHITECTURAL METAL AND GLASS. ALL SCREWS AND FITTINGS SHALL BE DRAWN UP TIGHTLY. RAILS SHALL BE SET PLUMB AND ALIGNED. RAILING SUB-CONTRACTOR WHO MAKES THE INSTALLATION SHALL BE FULLY RESPONSIBLE FOR THE RIGIDITY, THE WORKMANSHIP AND THE FINISHED APPEARANCE OF THE INSTALLATION AND SHALL COMPLY WITH BLUMCRAFT INSTRUCTION SHEETS.

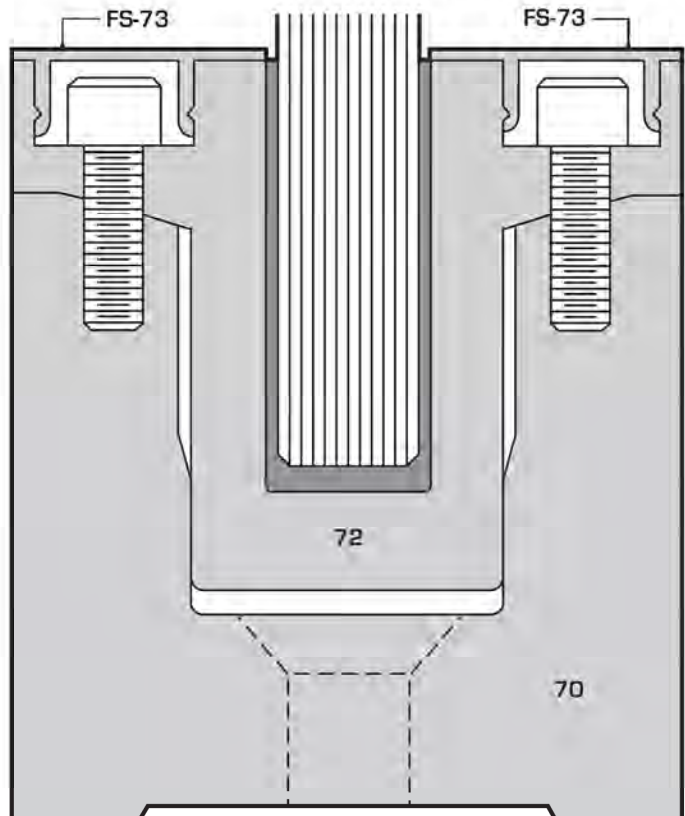
SHOP DRAWINGS - THE RAILING SUB-CONTRACTOR SHALL FORWARD SHOP DRAWINGS TO BLUMCRAFT FOR MANUFACTURER'S RECOMMENDATIONS PRIOR TO SUBMISSION OF BLUMCRAFT'S DRAWINGS FOR ARCHITECT'S APPROVAL.

NOTE TO ARCHITECT - AS THE RIGIDITY OF THE RAILGLASS WITHOUT POSTS IS DEPENDENT ON THE METHOD OF MOUNTING THE ALUMINUM BASE TO THE BUILDING SUB-STRUCTURE, IT IS SUGGESTED THAT THE ARCHITECT'S PRELIMINARY DRAWINGS BE REVIEWED BY BLUMCRAFT'S TECHNICAL STAFF.

RG-200 FOR 1/2" GLASS
SECTIONS SHOWN FULL SIZE



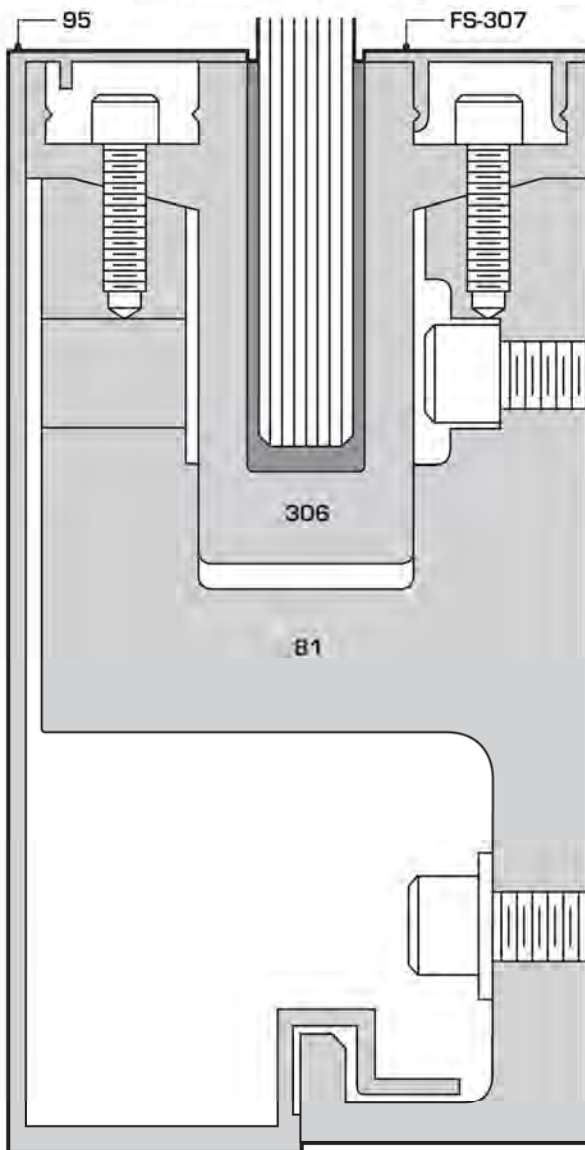
RG-500 FOR 3/4" GLASS



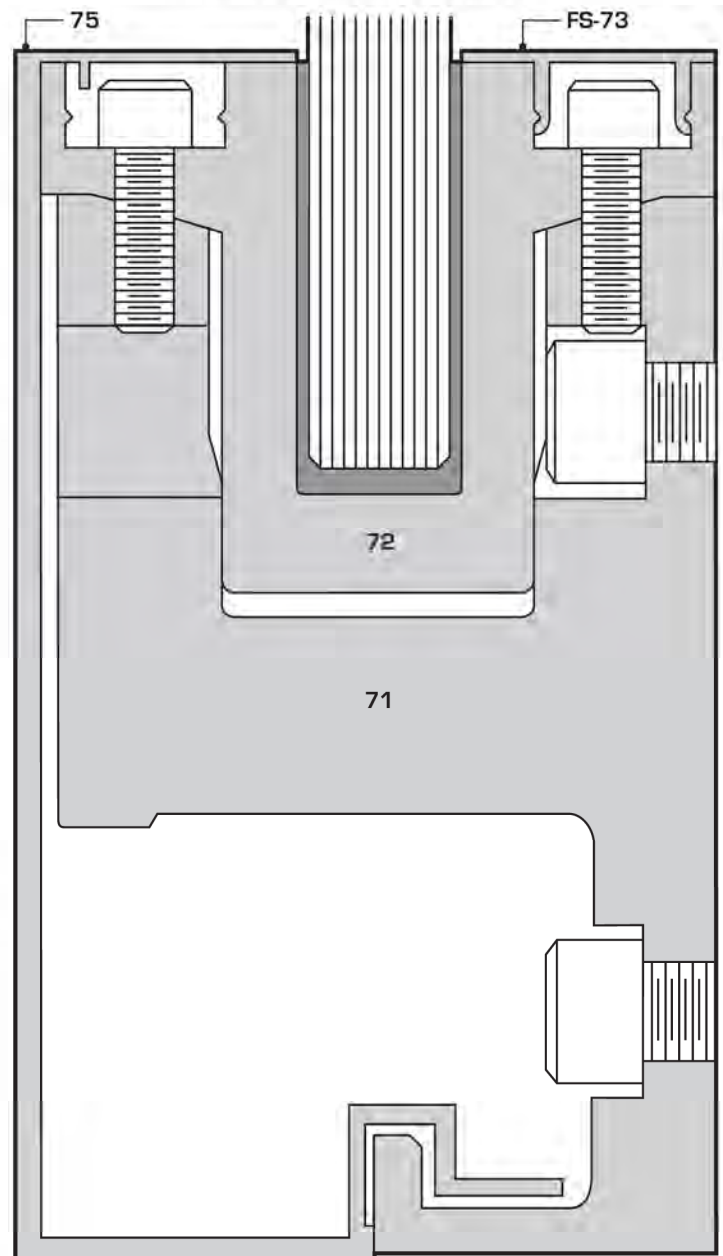
**ADVANTAGES OF A TWO PIECE MOUNTING BASE SYSTEM
 COMPARED TO A ONE PIECE MOUNTING BASE SYSTEM**

- **TWO PIECE MOUNTING BASE ISOLATES GLASS PANELS AGAINST SHOCK OF BUILDING MOVEMENT.**
 WITH A ONE PIECE MOUNTING BASE, FIELD GLAZED PANELS CANNOT BE ISOLATED.
- **TWO PIECE MOUNTING BASE PERMITS EASY GLASS PANEL REPLACEMENT BY MEANS OF BOLTS.**
 A ONE PIECE MOUNTING BASE REQUIRES CHIPPING OUT THE EMBEDDED GLASS AT BUILDING SITE.
- **FACTORY CONTROLLED BONDING OF GLASS WITH TWO PIECE MOUNTING BASE PERMITS INSTALLATION OF PANELS IN ANY KIND OF WEATHER AND TEMPERATURE.**
 WITH A ONE PIECE MOUNTING BASE, BONDING AT THE BUILDING SITE IS DONE WITH THE RISK OF UNCONTROLLED TEMPERATURE, MOISTURE AND INTERFERENCE FROM OTHER TRADE PERSONNEL.

RG-450 FOR 1/2" GLASS



RG-650 FOR 3/4" GLASS



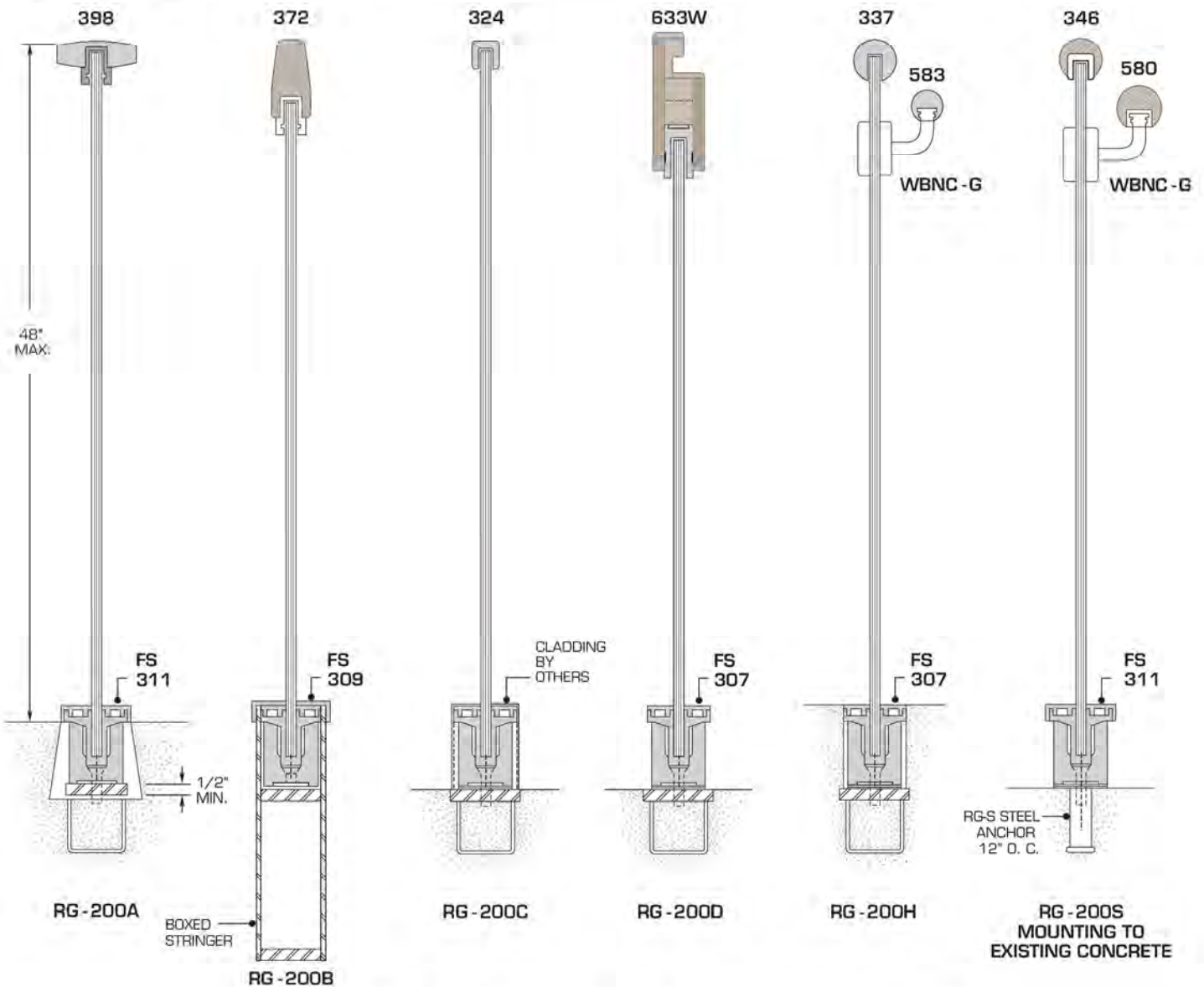
SECTIONS SHOWN FULL SIZE

BLUMCRAFT RAILGLASS IS A STRUCTURAL GLASS BALUSTRADE SYSTEM THAT CAN BE PROVIDED FULLY FACTORY FABRICATED AND GLAZED WITH TEMPERED GLASS. THE BASE COMPONENTS ARE MANUFACTURED FROM ALUMINUM AND FURNISHED FACTORY DRILLED AND TAPPED. STANDARD MOUNTING BOLTS ARE PROVIDED. A VARIETY OF TOP RAILS AND HANDRAILS ARE AVAILABLE. BLUMCRAFT RECOMMENDS CONSULTING WITH LOCAL CODE OFFICIALS FOR LOAD AND RAIL REQUIREMENTS.

PLEASE REFER TO STRUCTURAL LOAD CAPABILITIES FOR GLASS PANEL SIZES. CONTACT BLUMCRAFT FOR INFORMATION REGARDING GLASS PANEL SIZING AND BASE MOUNTING BOLT REQUIREMENTS. SEE PAGES 6 AND 7 FOR FULL SIZE BASE SECTION DETAILS.

STRUCTURAL LOAD CAPABILITIES - BLUMCRAFT GLASS RAILINGS ARE CONSTRUCTED TO MEET ALL TYPICAL CODE REQUIREMENTS FOR RAIL HEIGHTS OF 3'-6" AND LESS, IF CODE SPECIFIES.

DISTRIBUTED LOAD	CONCENTRATED LOAD	GLASS	MINIMUM LENGTH OF RAIL
50 PLF	200#	1/2"	4'-0"
100 PLF	300#	3/4"	2'-6"



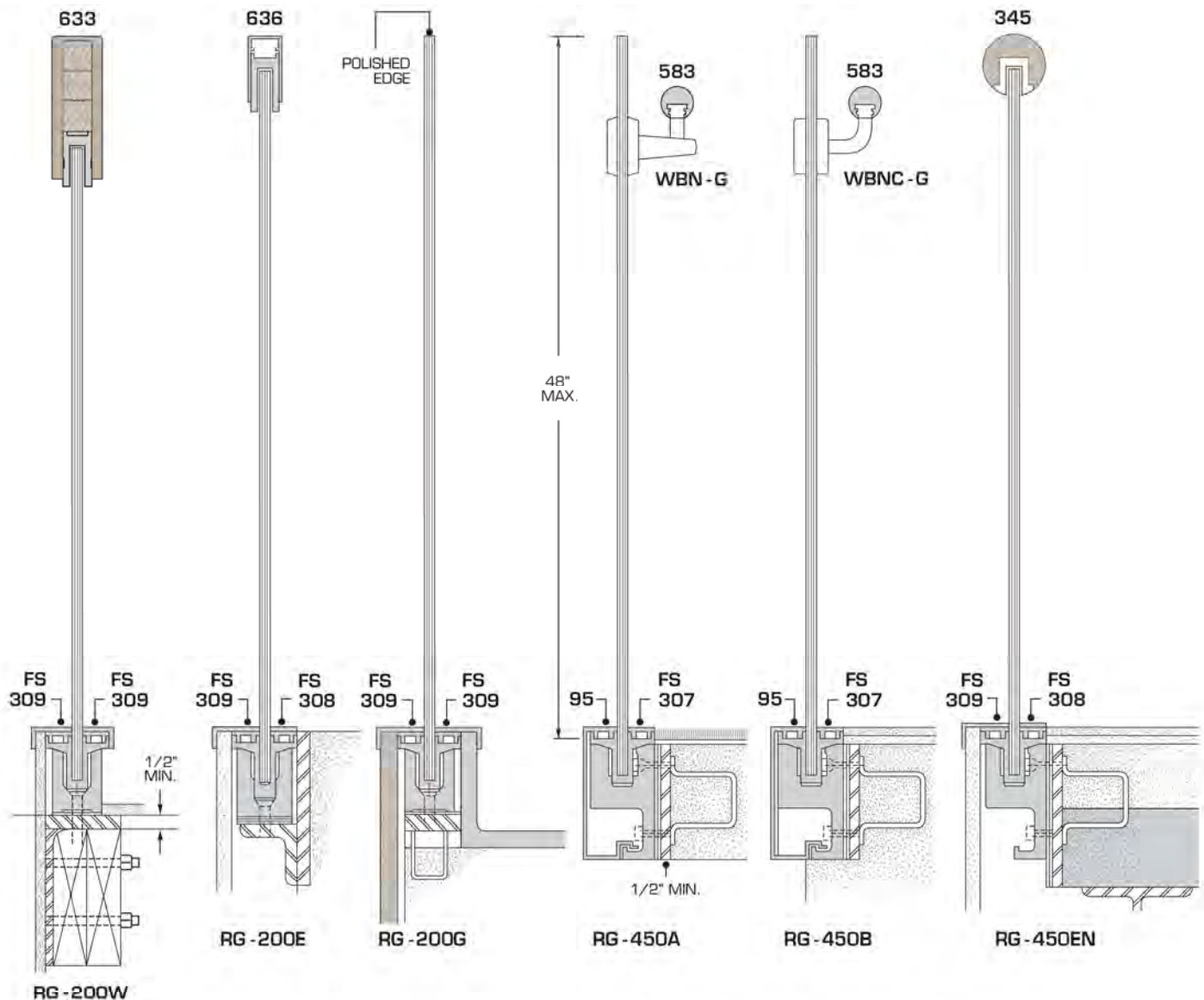
TYPICAL MOUNTINGS FOR 1/2 GLASS, STEEL SUB-STRUCTURES BY OTHERS

SEE PAGE 10 FOR 3/4 GLASS MOUNTINGS

RAILGLASS TOP RAILS ARE AVAILABLE IN ALUMINUM, STAINLESS STEEL AND RAILWOOD. THE TOP RAIL MOUNTS TO THE TOP EDGE OF THE GLASS PANELS USING BLUMCRAFT ST-300 SYSTEM. AUXILIARY HANDRAILS ARE ALSO AVAILABLE IN ALUMINUM, STAINLESS STEEL AND RAILWOOD. THE HANDRAIL MOUNTS USING WBNC GLASS MOUNTING BRACKETS (STAINLESS STEEL) OR WBN GLASS BRACKETS (ALUMINUM). CONTACT FACTORY FOR MOUNTING BRACKET PLACEMENT RECOMMENDATIONS. MATCHING WALL BRACKETS ARE AVAILABLE. SEE PAGES 18 THRU 21 FOR FULL SIZE TOP RAIL AND HANDRAIL SECTIONS.

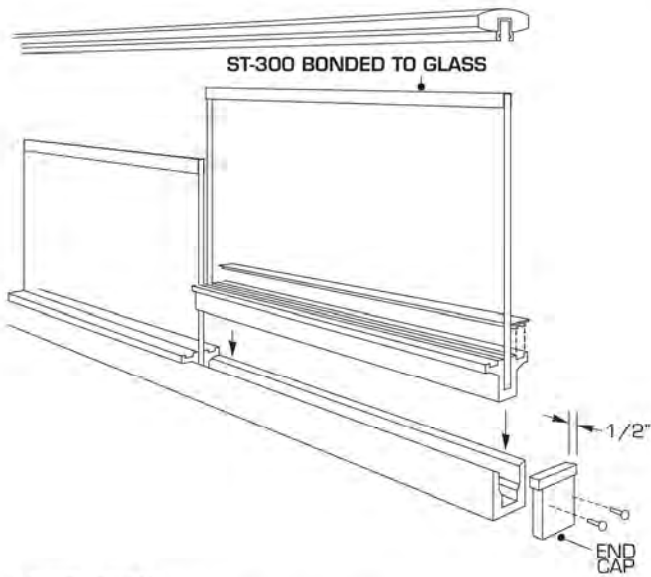
BLUMCRAFT ALUMINUM COMPONENTS ARE AVAILABLE IN SATIN FINISHED CLEAR ANODIZED, BRONZE DURANODIC SHADES OR BLACK. BLUMCRAFT ANODIZED FINISHES ARE PRODUCED IN OUR OWN FACTORY AND EXCEED THE INDUSTRY STANDARD.

RAILWOOD COMPONENTS ARE MANUFACTURED WITH ALUMINUM SUB-RAILS FOR STABILITY AND SERVICEABILITY. RAILWOOD TOP RAILS AND HANDRAILS CAN BE FACTORY FINISHED AND ARE AVAILABLE IN A VARIETY OF WOOD SPECIES INCLUDING WHITE OAK, MAPLE, WALNUT, CHERRY, AND MAHOGANY.

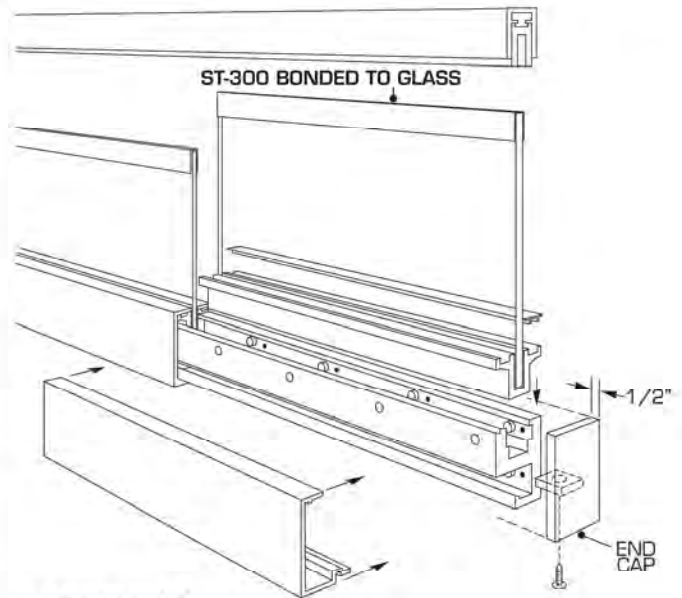


TYPICAL MOUNTINGS FOR 1/2 GLASS, STEEL SUB-STRUCTURES BY OTHERS

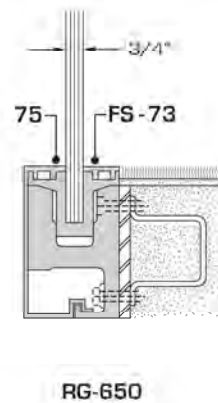
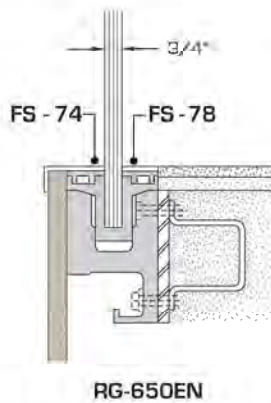
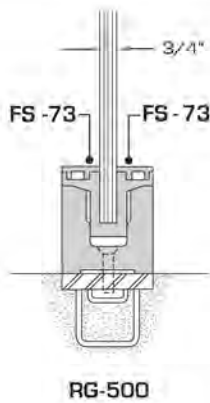
SEE PAGE 10 FOR 3/4 GLASS MOUNTINGS



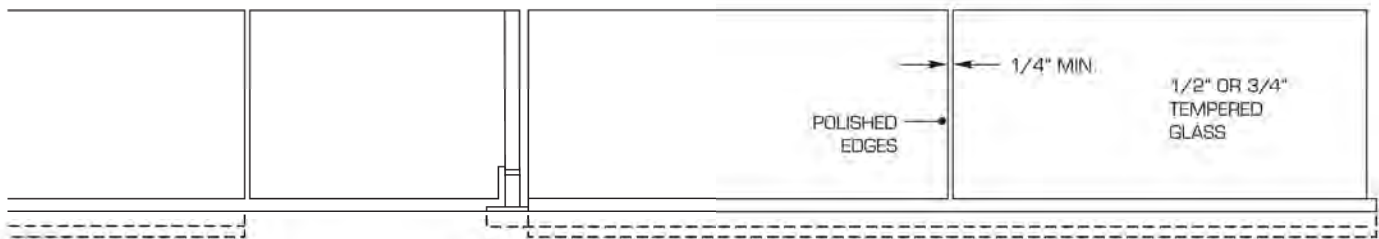
ASSEMBLY:
RG-200 FOR 1/2" GLASS
RG-500 FOR 3/4" GLASS



ASSEMBLY:
RG-450 FOR 1/2" GLASS
RG-650 FOR 3/4" GLASS



TYPICAL MOUNTINGS FOR 3/4" GLASS
SEE FULL SIZE SECTIONS ON PAGES 6 AND 7

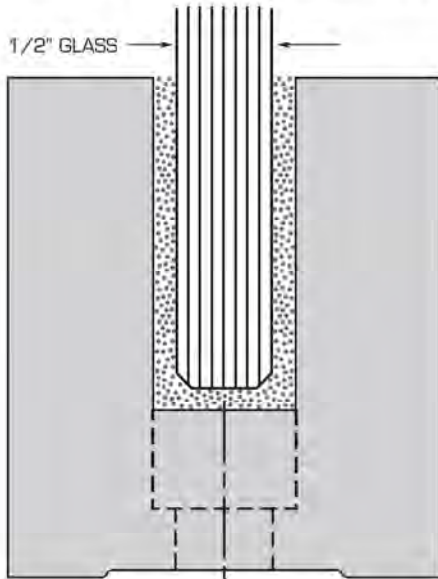


RAILGLASS IS CONSTRUCTED OF TEMPERED GLASS IN ANY HEIGHT UP TO 48" AND LENGTHS UP TO 60"
WITH DIMENSIONAL TOLERANCE OF PLUS 0" OR MINUS 1/8" OF THE ACTUAL OVERALL DIMENSIONS.
FOR GLASS GATES REFER TO PAGE 22.

GLASS PANELS FIELD GLAZED ONE PIECE MOUNTING BASE SYSTEM

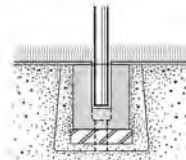
ALTHOUGH OUR TWO PIECE BASE SYSTEMS ARE PREFERRED, BLUMCRAFT OFFERS 3 ONE PIECE BASE SHAPES FOR USE WHEN INSTALLATION OF THE GLASS MUST BE DONE AT THE BUILDING SITE.

BLUMCRAFT'S RG-X BONDING MATERIAL AND COMPLETE INSTRUCTIONS ARE INCLUDED TO ASSIST THE INSTALLER ACHIEVE A RIGID ASSEMBLY.

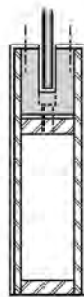


RG-100S
BONDED AT BUILDING SITE

DISTRIBUTED LOAD	CONCENTRATED LOAD	GLASS	MINIMUM LENGTH OF RAIL
50 PLF	200#	1/2"	4'-0"
100 PLF	300#	3/4"	2'-6"

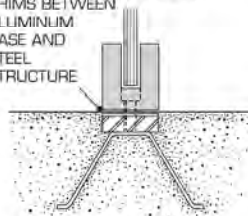


RG-100S A

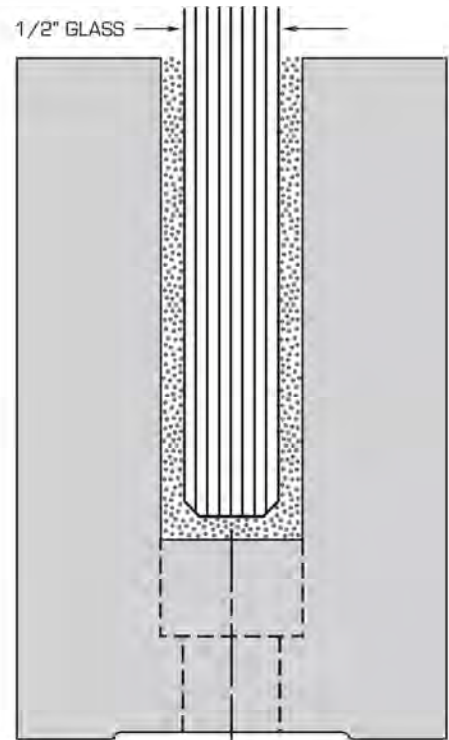


RG-100S B

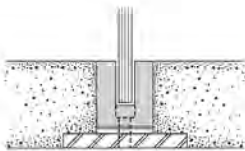
ALLOW SPACE FOR LEVELING SHIMS BETWEEN ALUMINUM BASE AND STEEL STRUCTURE



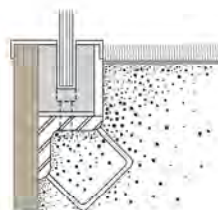
RG-100S C



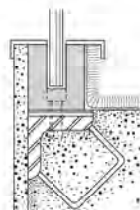
RG-105S
BONDED AT BUILDING SITE



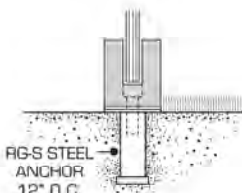
RG-100S E



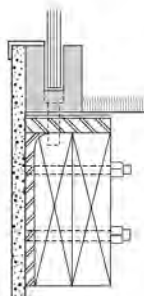
RG-100S F



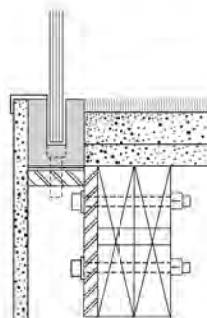
RG-100S G



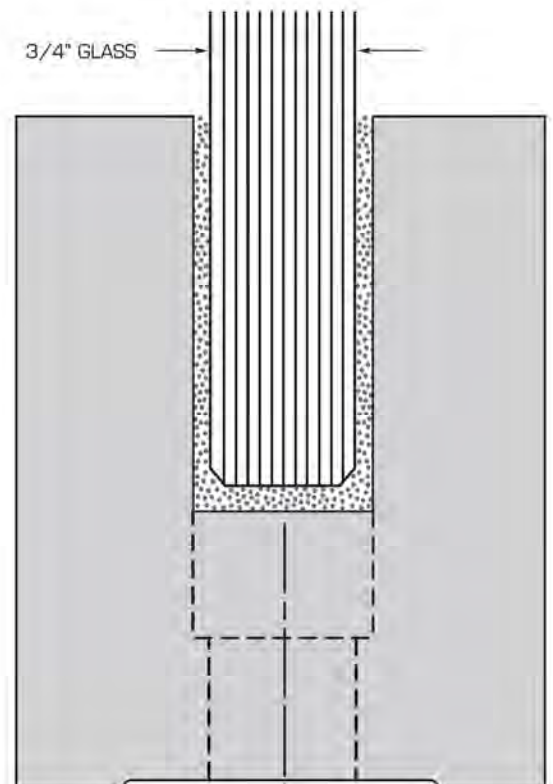
RG-100S H



RG-100S J



RG-100S K



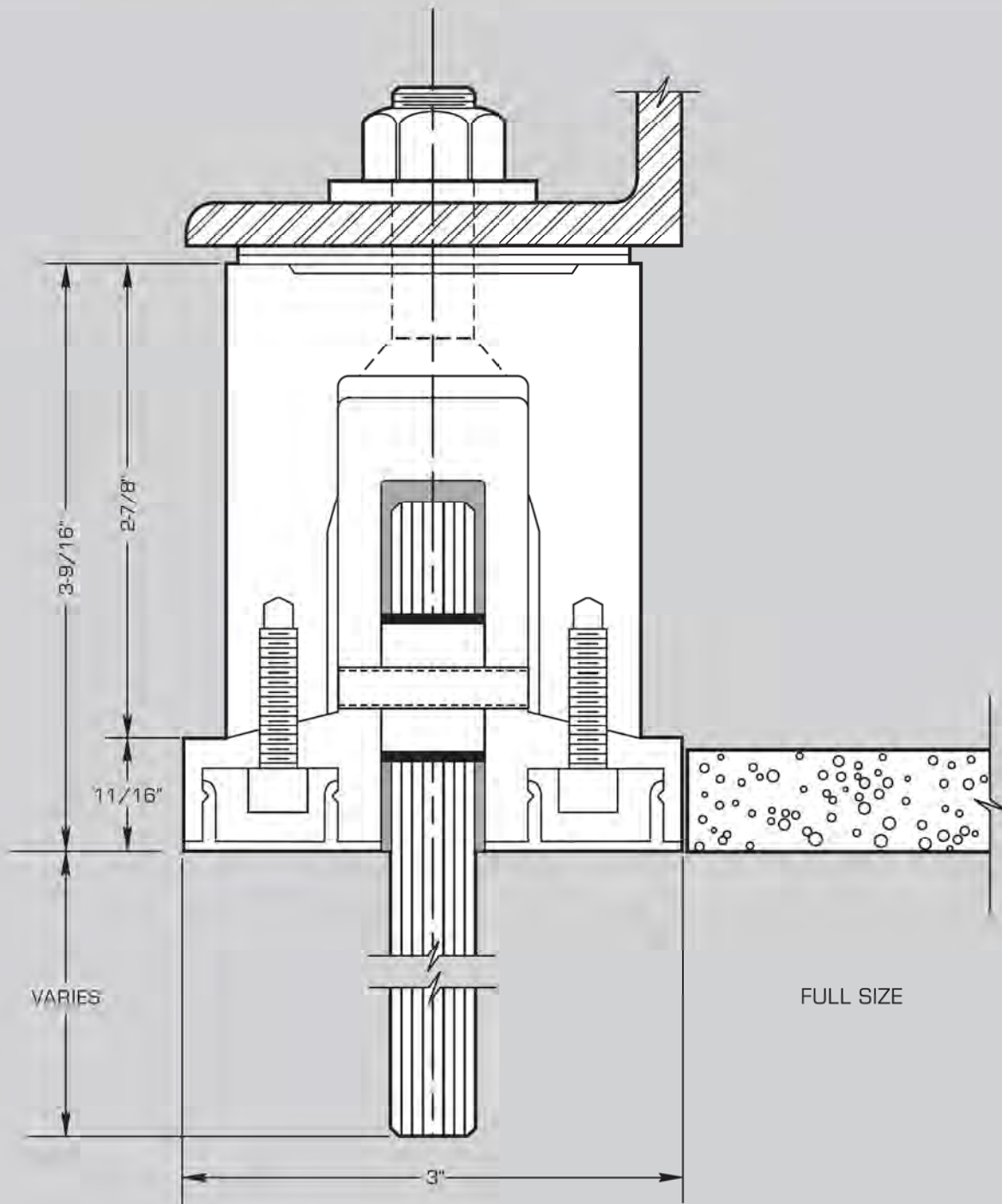
RG-175S
BONDED AT BUILDING SITE



ADVANTAGES OF BLUMCRAFT'S TWO PIECE SMOKE BAFFLE SYSTEM

1. TWO PIECE MOUNTING BRACKET ISOLATES GLASS PANELS AGAINST THE SHOCK OF BUILDING MOVEMENT...
CAUTION: WITH A SINGLE MOUNTING BRACKET, FIELD GLAZED PANELS CANNOT BE ISOLATED AND ARE SUBJECT TO BREAKAGE.
2. TWO PIECE MOUNTING BRACKET PERMITS EASY GLASS PANEL REPLACEMENT BY USING READILY ACCESSIBLE BOLTS...
CAUTION: A SINGLE MOUNTING BRACKET REQUIRES CHIPPING OUT THE EMBEDDED GLASS AT BUILDING SITE.

SEE PAGE 23 FOR NOTABLE SMOKE BAFFLE INSTALLATIONS.

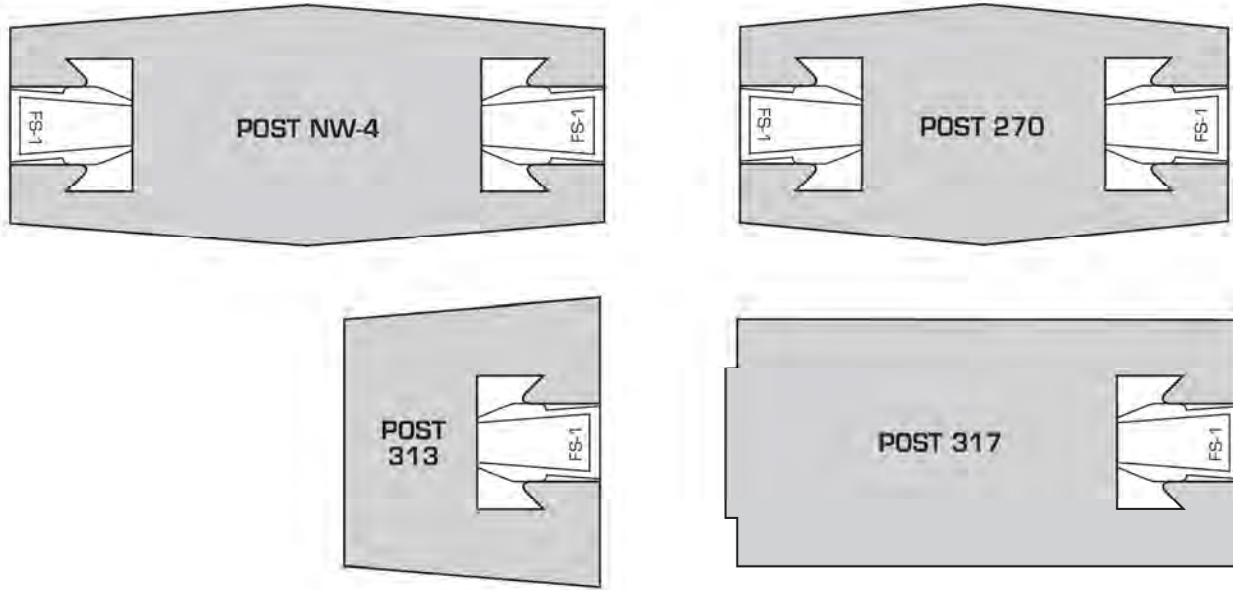


3. FACTORY CONTROLLED BONDING OF GLASS WITH THE TWO PIECE MOUNTING BRACKET PERMITS INSTALLATION OF PANELS AT ANY TEMPERATURE . . . *CAUTION:* WITH A SINGLE MOUNTING BRACKET, INSTALLATION IS UNDERTAKEN WITH THE RISK OF TEMPERATURE VARIATIONS, UNCONTROLLED MOISTURE, SHOCK OF BUILDING MOVEMENT, AND INTERFERENCE OF OTHER TRADES.
4. AS A SAFETY FEATURE, GLASS PANELS ARE SECURELY BONDED AND MECHANICALLY ATTACHED TO THE REMOVABLE PORTION OF THE SYSTEM AT BLUMCRAFT'S FACTORY.

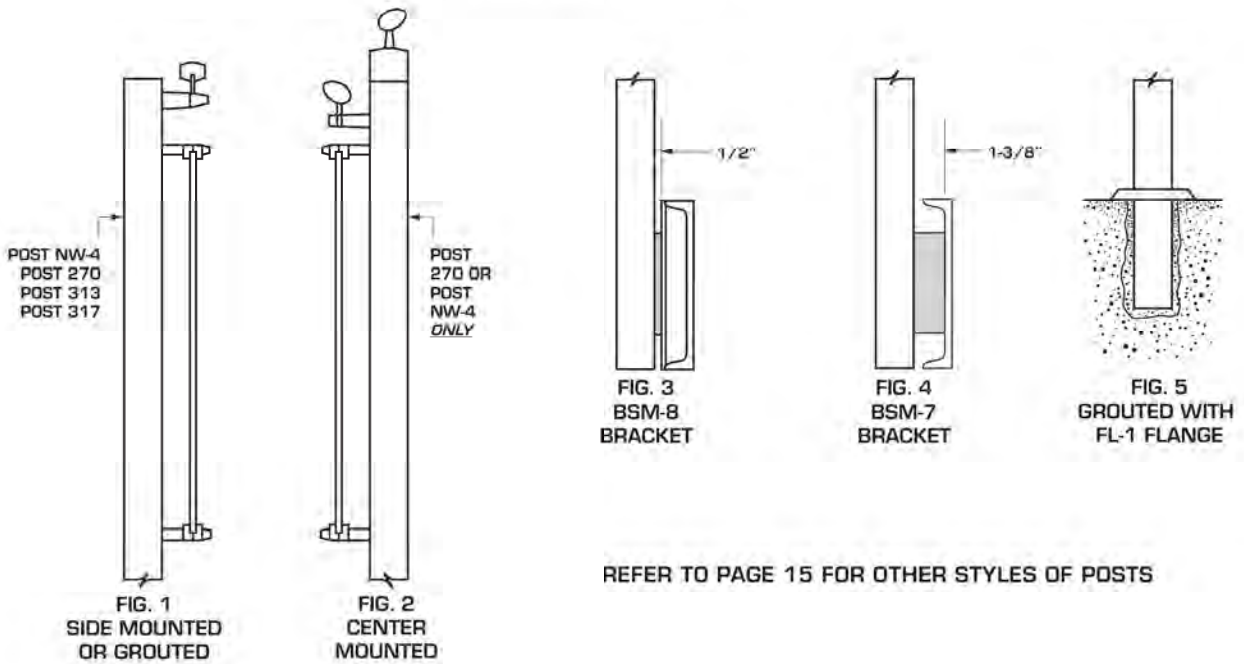
IMPORTANT NOTE:

**GLASS MUST BE BONDED TO SB-200 BASE AT BLUMCRAFT'S FACTORY UNDER CONTROLLED CONDITIONS
NO EXCEPTIONS**

BLUMCRAFT OFFERS ALUMINUM POSTS THAT CAN BE GROUTED OR SIDE MOUNTED. SLOTTED POSTS PROVIDE VERTICAL ADJUSTMENT OF RAIL HEIGHT. STARTING POSTS EVEN WHEN SIDE MOUNTED SHOULD EXTEND INTO THE FLOOR FOR ADDED RIGIDITY. CONTACT BLUMCRAFT FOR ASSISTANCE IN DETERMINING THE PROPER SPACING BETWEEN POSTS.



POST MOUNTINGS





POST
313

POST
NW-4

POST
PCN-SPN-1

POST
SPN-1

ROUND POSTS
ARE AVAILABLE
WITH RAIL
CONNECTIONS
EITHER CENTERED OR OFFSET

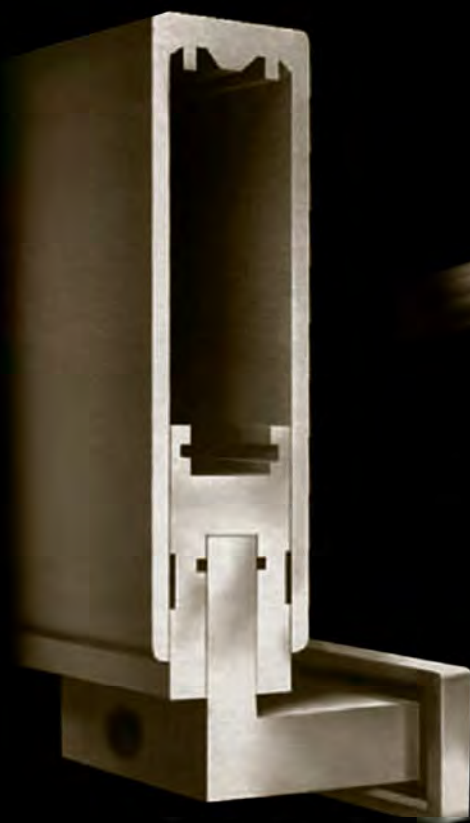
Details with a variety of mountings and dimensions are available upon request.



WBN WALL BRACKETS



87-AL-R WALL BRACKET



**WBH WALL BRACKET
AVAILABLE WITH
ALUMINUM OR RAILWOOD**



**WBNC-S WALL
BRACKET**



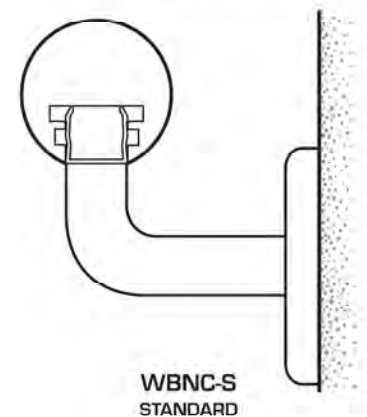
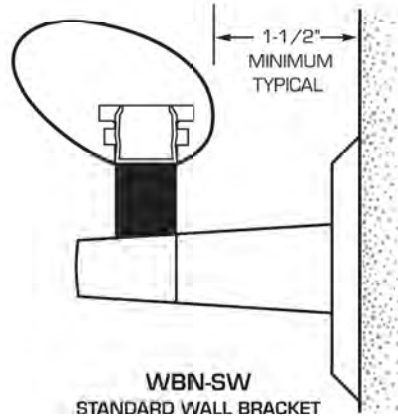
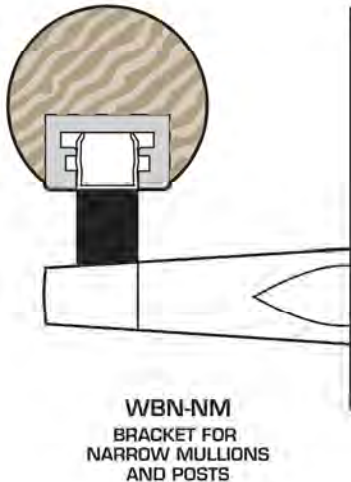
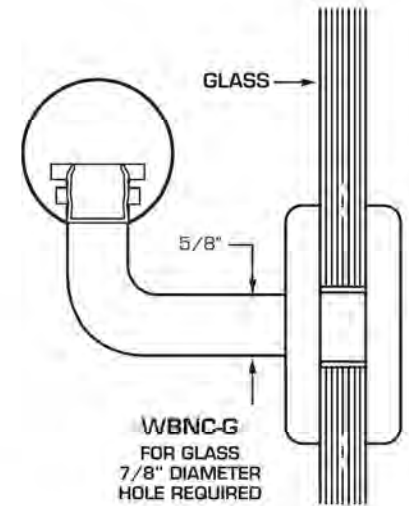
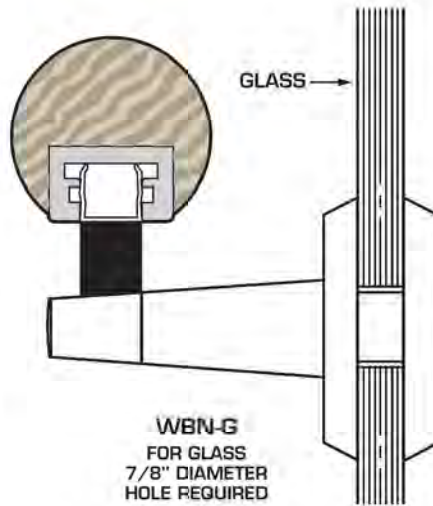
**WBN-G GLASS
BRACKET**



**WBNC-G GLASS
BRACKET**

BLUMCRAFT MANUFACTURES A VARIETY OF BRACKETS THAT CAN BE MOUNTED TO WALLS USING EXPANSION SHIELDS, LAG BOLTS, OR TOGGLES.

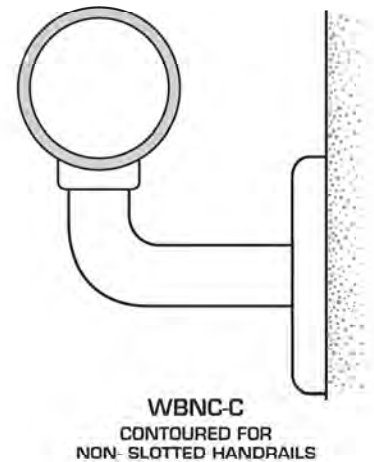
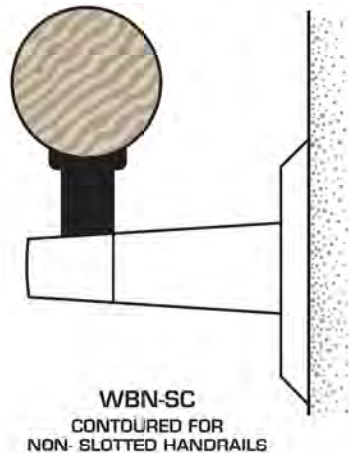
WBN WALL BRACKETS ARE MADE FROM ALUMINUM IN A STANDARD SATIN CLEAR ANODIZED FINISH AS WELL AS MEDIUM BRONZE, DARK BRONZE, AND BLACK DURANODIC. THESE BRACKETS HAVE A TAPERED PROFILE AND WHEN USED IN CONJUNCTION WITH THE PROPER AFN FITTING, CAN ACCEPT BLUMCRAFT HANDRAILS OR OTHER HANDRAIL SHAPES.



WBNC BRACKETS CAN BE MOUNTED TO GLASS PANELS AS WELL AS DIRECTLY TO STRUCTURAL WALLS. THE BRACKETS ARE AVAILABLE ONLY IN STAINLESS STEEL OR ARCHITECTURAL BRONZE. FINISHES INCLUDE SATIN, HIGH BUFF LUSTER, AND STATUARY BRONZE.

WBH WALL BRACKETS ARE DESIGNED FOR BLUMCRAFT'S HIGH ALUMINUM AND RAILWOOD RAILING SYSTEMS. THE WBH BRACKETS CAN BE FURNISHED IN THE ALUMINUM FINISHES SHOWN ABOVE.

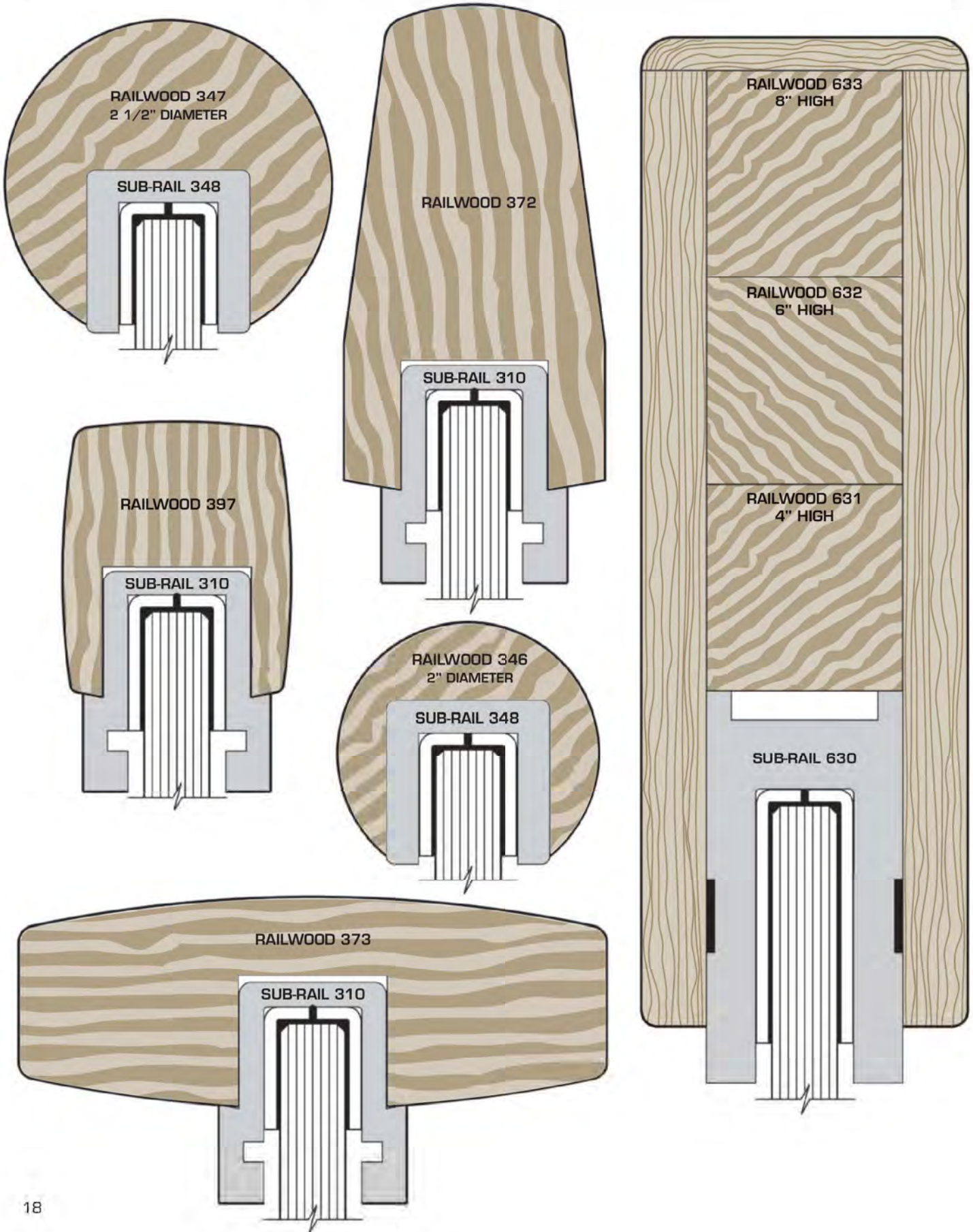
B7-AL-R WALL BRACKETS ARE DESIGNED FOR USE WITH PLANK RAILS. FINISHED CAPS ARE RECESSED INTO THE WOOD HANDRAIL FACE FOR A SMOOTH FLUSH APPEARANCE.

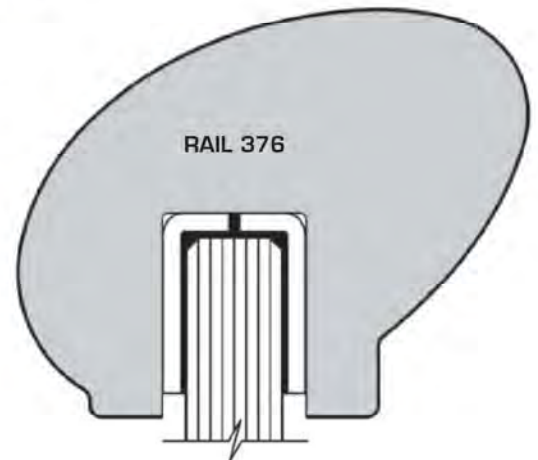
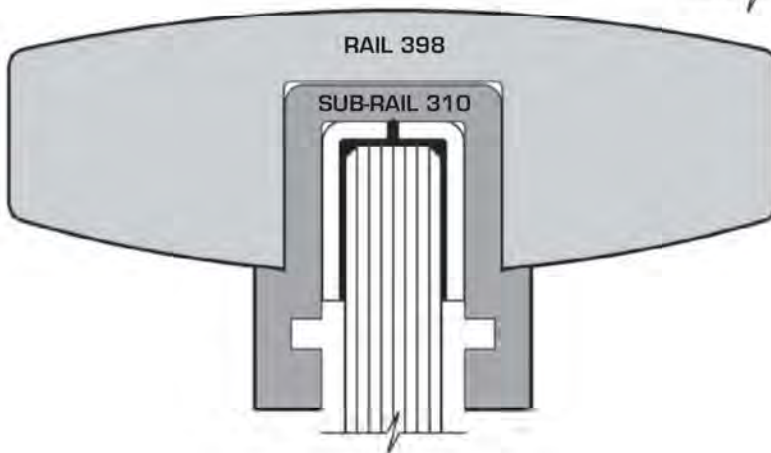
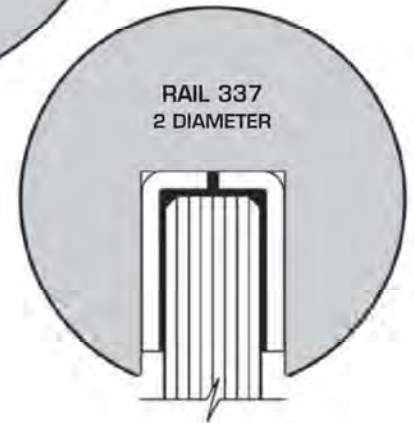
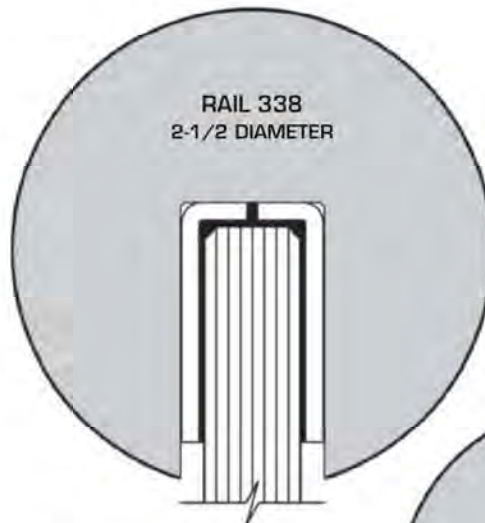
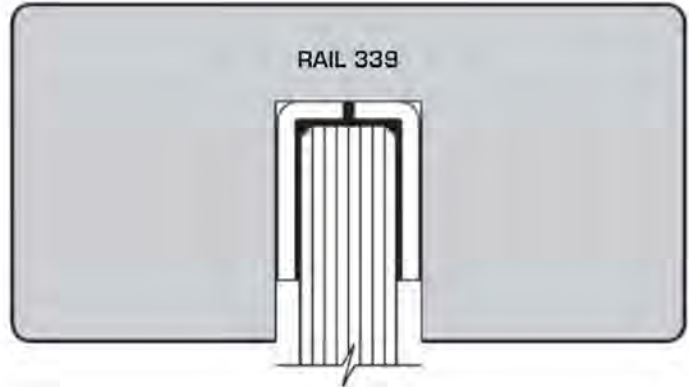
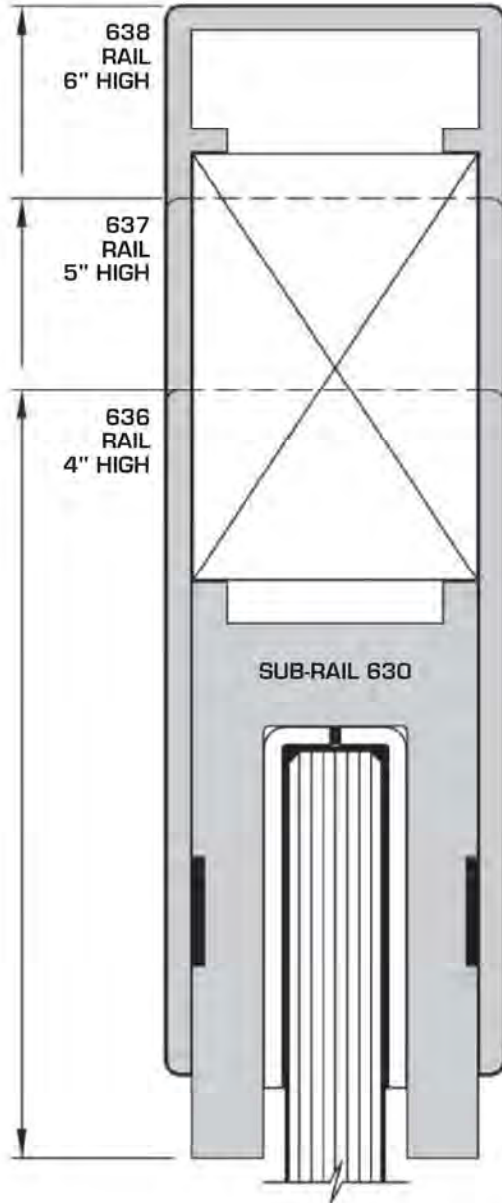


ABOVE WALL BRACKETS AVAILABLE ONLY IN ALUMINUM

ABOVE WALL BRACKETS AVAILABLE ONLY IN STAINLESS STEEL OR ARCHITECTURAL BRONZE

SCALE HALF SIZE

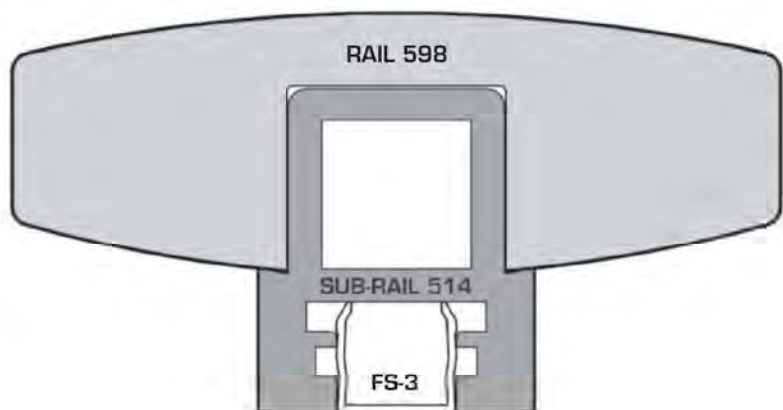
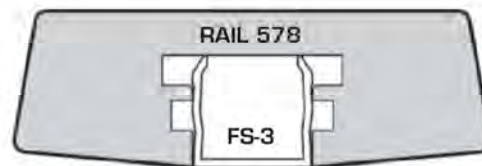
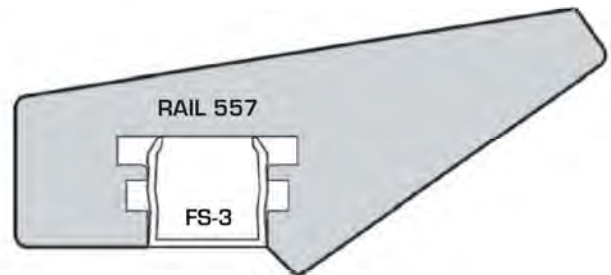
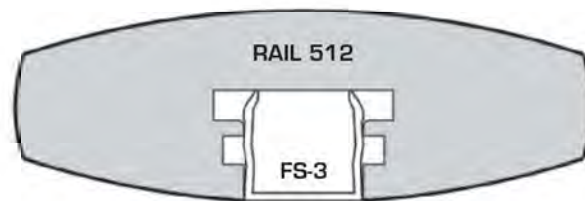
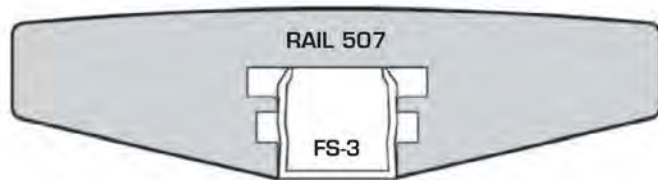
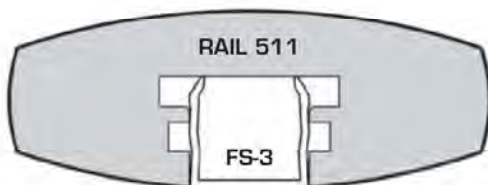
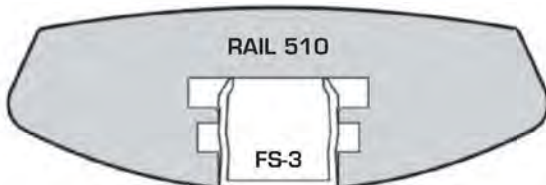
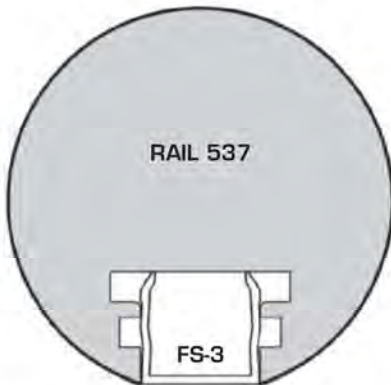
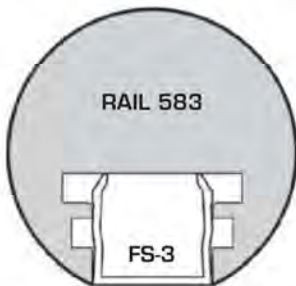
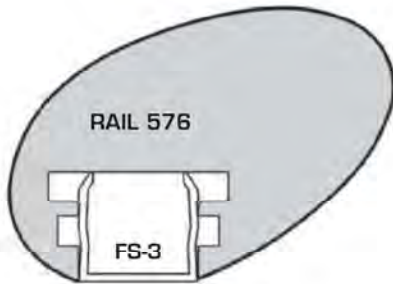




ALUMINUM HANDRAILS

BLUMCRAFT'S WIDE VARIETY OF ALUMINUM HANDRAILS CAN BE FACTORY FABRICATED BUT ARE AVAILABLE IN 12'-0" OR 20'-0" STOCK LENGTHS. THESE RAILS HAVE A

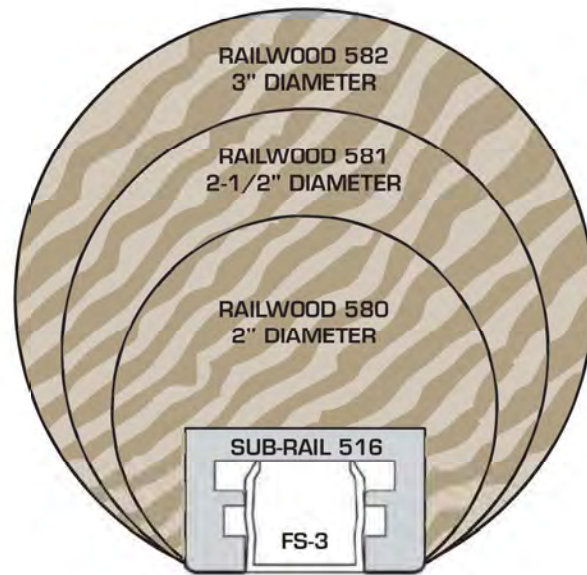
DOUBLE T-SLOT WHICH ACCEPTS AFN FITTINGS, T-BARS FOR SPLICING, AND FILLER STRIPS FOR A FINISHED LOOK. FINISHES INCLUDE MILL IN 20'-0" LENGTHS OR SATIN CLEAR ANODIZED, MEDIUM, DARK, OR BLACK DURANODIC IN 10'-0" LENGTHS.



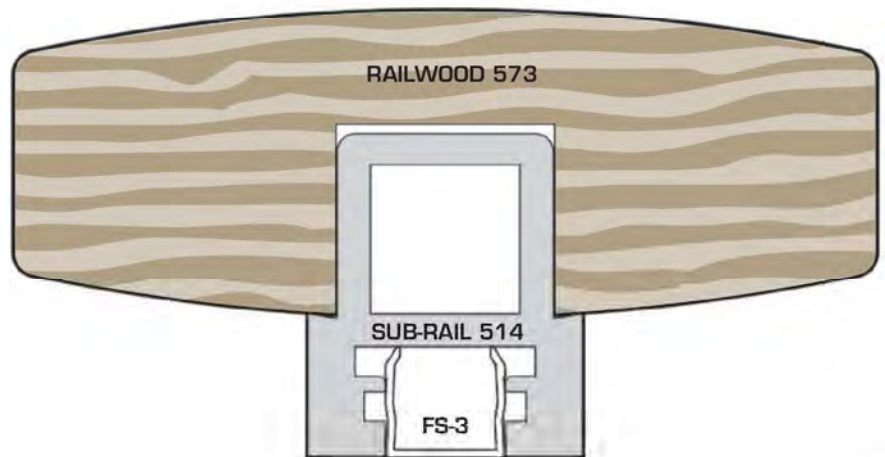
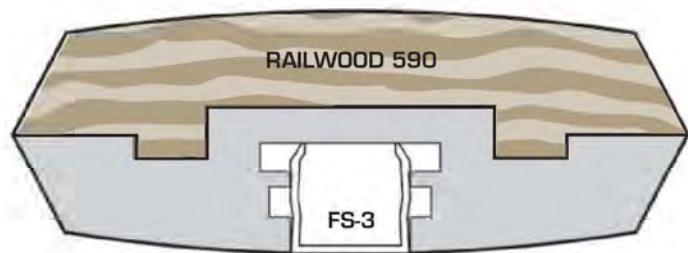
**RAILWOOD HANDRAILS WITH
ALUMINUM SUB-STRUCTURE**

THE ALUMINUM SUB-STRUCTURE AND SCULPTURED
TERMINALS BONDED TO THE WOOD PRODUCES A
PLEASING AND ATTRACTIVE HANDRAIL. THIS
CONTINUOUS ALUMINUM TRACK PREVENTS WARPAGE

AND TWISTING OF THE WOOD. RAILWOOD IS
FURNISHED COMPLETE IN A RUBBED OIL FINISH WITH
THE ALUMINUM PORTION AVAILABLE IN SATIN CLEAR,
ANODIZED, BRONZE DURANODIC SHADES AND BLACK.
FURNISHED IN WALNUT OR OAK AS STANDARD WITH
OTHER WOODS AVAILABLE.



SPECIAL WOOD DIAMETERS AVAILABLE



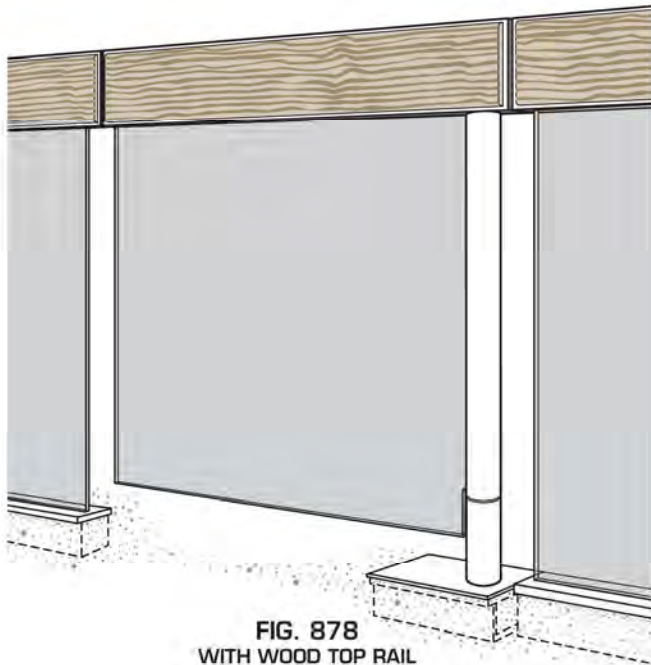


FIG. 878
WITH WOOD TOP RAIL

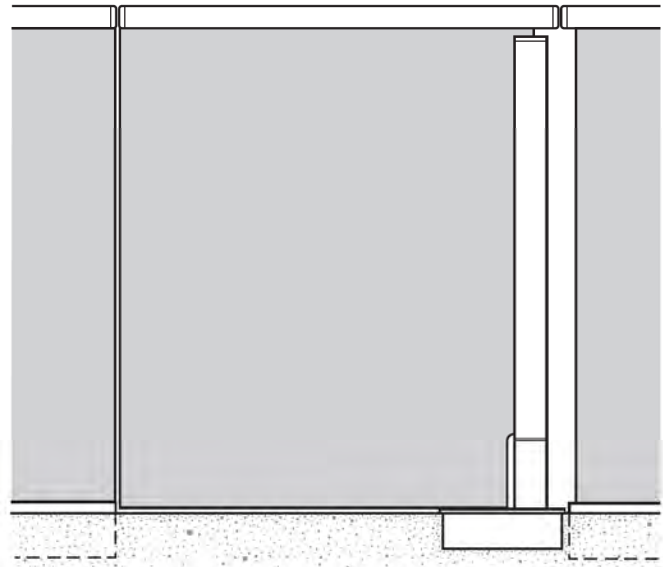
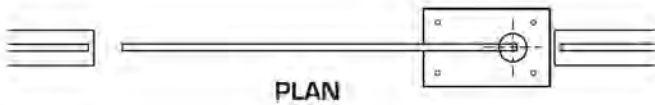


FIG. 879
WITH METAL TOP RAIL

**NOTE: WHEN LOCKS OR LATCHES ARE USED,
A HINGED TOP PIVOT IS RECOMMENDED**



PLAN

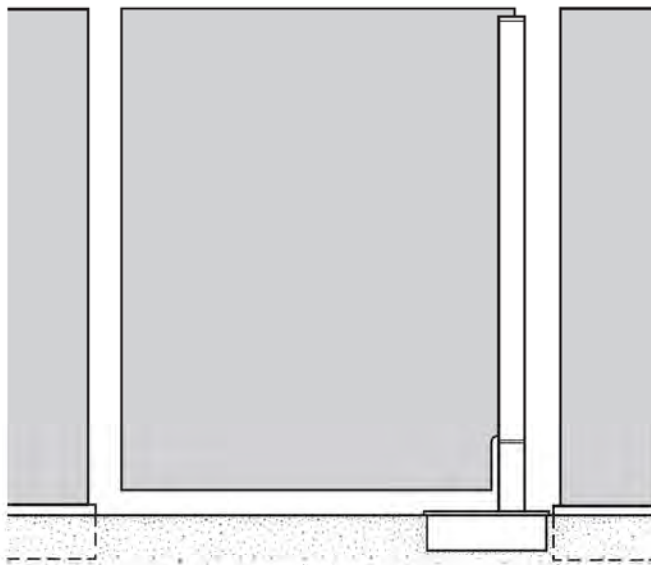
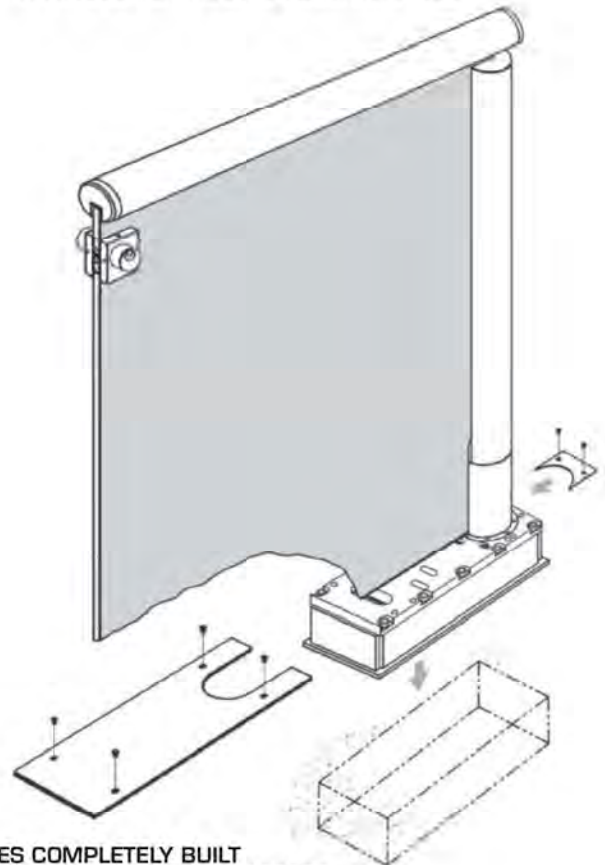


FIG. 880
WITHOUT TOP RAIL

FREE STANDING GATE POSTS

THE GATES OPERATE ON THE PRINCIPLE OF BEING ANCHORED TO THE FLOOR ONLY.

AN ADJUSTABLE CEMENT CASE FOR A DORMA BTS-75V OR BTS-80 FLOOR CLOSER IS SUPPLIED TO ALLOW THE CENTER PIVOTED GATE TO BE PLUMBED, LEVELED AND ADJUSTED AFTER INSTALLATION.



**GATES COMPLETELY BUILT
AND ASSEMBLED BY BLUMCRAFT
TO FABRICATOR'S DIMENSIONS . . .
ALL BLUMCRAFT HANDRAILS
APPLICABLE.**

SEE PAGE 23 FOR NOTABLE GLASS GATE INSTALLATIONS.

OVER 80,000 BLUMCRAFT INSTALLATIONS CAN BE FOUND IN SOME OF THE MOST PRESTIGIOUS BUILDINGS THROUGHOUT THE WORLD. THE FOLLOWING IS A PARTIAL LISTING OF NOTABLE PROJECTS WHERE VARIOUS BLUMCRAFT SYSTEMS HAVE BEEN INSTALLED.

SMOKE BAFFLE SYSTEMS

**SMITH COLLEGE-
ENGINEERING**
Northampton, MA

**ST. AGNES
BRANCH LIBRARY**
New York, NY

**JOHN TYLER
COMMUNITY
COLLEGE**
New York, NY

**MOREHEAD STATE
UNIVERSITY SPACE
SCIENCE CENTER**
Morehead, KY

**EMANUEL CELLER
U.S. COURTHOUSE**
Brooklyn, NY

TARGET
Trumbull West, CT

**SYRACUSE
UNIVERSITY
LIFE SCIENCES
COMPLEX**
Syracuse, NY

**UNIVERSITY OF
VIRGINIA MEDICAL
RESEARCH CENTER**
Charlottesville, VA

**HACKETT
MIDDLE SCHOOL**
Albany, NY

**LIBERTY NATIONAL
INSURANCE**
Jersey City, NJ

**OAKLAND CATHOLIC
HIGH SCHOOL**
Pittsburgh, PA

GLASS GATES

**UNITED NATIONS
LOBBY**
New York, NY

CRATE & BARREL
*Towson, MD and
Paramus, NJ*

**BLUE CROSS/
BLUE SHIELD**
Dallas, TX

**PENN STATE
UNIVERSITY
CHEMISTRY
BUILDING**
State College, PA

**ALLEN STREET
HOTEL**
White Plains, NY

TF GREEN AIRPORT
Warwick, RI

**BISHOP MUSEUM
SCIENCE LEARNING
CENTER**
Honolulu, HI

KEAN UNIVERSITY
Union, NJ

RAILING SYSTEMS

**BOSTON
UNIVERSITY
MEDICAL CENTER**
Boston, MA

**SYRACUSE
UNIVERSITY
LIFE SCIENCES
COMPLEX**
Syracuse, NY

**NATIONAL PARK
VISITORS CENTER**
Lookout Mountain, TN

**CHEVY CHASE
CENTER**
Chevy Chase, MD

**GRAND RAPIDS
ART MUSEUM**
Grand Rapids, MI

**FRANK SINATRA
MUSEUM**
New York, NY

**VILLANOVA
UNIVERSITY**
Philadelphia, PA

**MELBOURNE
AIRPORT**
Melbourne, FL

HARRAH'S
Kansas City, MO

ICE ARENA
Thief River Falls, ND

**UNIVERSITY
OF BALTIMORE
STUDENT CENTER**
Baltimore, MD

**GETTYSBURG
NATIONAL
BATTLEFIELD
MUSEUM AND
VISITORS CENTER**
Gettysburg, PA

TARGET
Various Locations

U.S. EMBASSY
Tanzania, Africa

**WASHINGTON
& LEE UNIVERSITY**
Lexington, VA

**SITKA NATIONAL
PARK VISITOR
CENTER**
Anchorage, AK

**MUSEUM OF THE
THREE STOOGES**
Springhouse, PA

**HILLMAN CANCER
CENTER**
Pittsburgh, PA

**SAINT JAMES
HOSPITAL**
Olympia Fields, IL

**SONORA
COMMUNITY
HOSPITAL**
Sonora, CA

**PRENTICE WOMEN'S
HOSPITAL**
Chicago, IL

(Railing System Installations continued on Back Cover)



RAILING SYSTEMS *(continued)*

SAN JOSE AIRPORT
San Jose, CA

THE VIRGINIA PILOT
Virginia Beach, VA

KENT STATE UNIVERSITY
Kent, OH

ROCHESTER INSTITUTE OF TECHNOLOGY FIELDHOUSE AND ACTIVITY CENTER
Rochester, NY

LANDMARK HEART INSTITUTE
Olympia Fields, IL

TALBOT'S
Various Locations

CONGREGATION MIKVE ISRAEL
Savannah, GA

BROOKSBY VILLAGE
Warwick, RI

MILWAUKEE FEDERAL BUILDING
Milwaukee, WI

BISHOP MUSEUM SCIENCE CENTER
Waipahu, HI

U.S. INSTITUTE OF PEACE
Washington, DC

TRENT LOTT CENTER UNIVERSITY OF SOUTHERN MISSISSIPPI
Hattiesburg, MS

HENNEPIN COUNTY JUSTICE CENTER
St. Paul, MN

FLETCHER JONES MERCEDES
Las Vegas, NV

CUYAHOGA COUNTY SHERIFF'S OFFICE
Cleveland, OH

NEWSEUM
Washington, DC

CARNEGIE MELLON UNIVERSITY SCHOOL OF COMPUTER SCIENCE
Pittsburgh, PA

SCHRINER'S HOSPITAL FOR CHILDREN
Oahu, HI

SOUTH PARK HIGH SCHOOL NATATORIUM
Pittsburgh, PA

CAPE COD COMMUNITY COLLEGE
Cape Cod, MA

ADMINISTRATIVE OFFICES ILLINOIS COURTS
Springfield, IL

NEW YORK PRESBYTERIAN HOSPITAL
New York, NY

BUSEY BANK
Champaign, IL

CAPE COD HOSPITAL
Hyannis, MA

UNIVERSITY OF CHICAGO SEARLE CHEMISTRY BUILDING
Chicago, IL

TF GREEN AIRPORT
Warwick, RI

BORDERS BOOK STORE
Evanston, IL

WESTIN HOTEL
Seattle, WA

DFS STORES
Guam

LIDO SPA HOTEL
Miami, FL

ADMIRALS CLUB/ AMERICAN AIRLINES
Various Locations



460 MELWOOD AVENUE • PITTSBURGH, PA 15213-1195
TELEPHONE 412-681-2400 • FAX 412-681-6840

E-mail (general inquiries for quick response): info@blumcraft.com
E-mail (for drawings/engineering department): eng@blumcraft.com

Visit our website at www.blumcraft.com